

# Steelmaking Engineering Monitoring



Corus Consulting Limited, Teesside Technology Centre, P.O. Box 11, Grangetown, Middlesbrough, Teesside TS6 6UB U.K. Telephone: +44 (0)1642 467144 Fax: +44 (0)1642 460321 E-mail: colin.notman@corusgroup.com

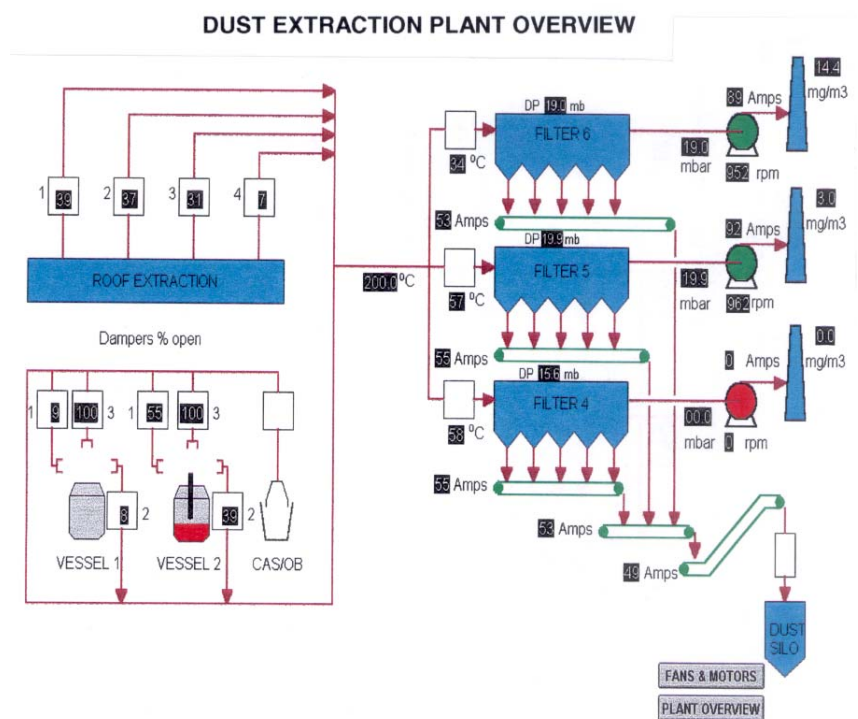
## DESIGN OF ENGINEERING MONITORING SYSTEMS

### CONCEPT:-

Modern Engineering Monitoring systems can provide engineers with the information they need to diagnose plant hardware faults, be fully aware of plant status and plan maintenance activity more effectively.

### DETAILS:-

Well designed Engineering Monitoring systems, based on PC based software and networks, can be tailored to provide information to plant based engineers and technologists enabling them to function more effectively. This can lead to increased plant availability, reduced operating costs and a more pro-active approach to engineering support. The key elements of such systems are the user interface, the navigation within the system and the presentation of information in addition to 'raw' data. Corus are now developing Engineering Monitoring, by exploiting current IT developments in a drive to ensure that engineers have the information they need to function more efficiently. It is important that the initial system design is carried out with clear objectives and that the development process is well structured.



Corus via its Teesside Technology Centre can provide consultancy on basic system requirements and design.

### BENEFITS:-

- Include:
- A more pro-active approach to engineering,
  - Rapid hardware fault diagnosis,
  - Prediction of potential fault conditions,
  - Reduced engineering costs,
  - Extension of plant hardware life,
  - Assessment of hardware modifications.

### STATUS:-

Systems being developed at Corus BOS Plants - current activity at Teesside and Port Talbot.